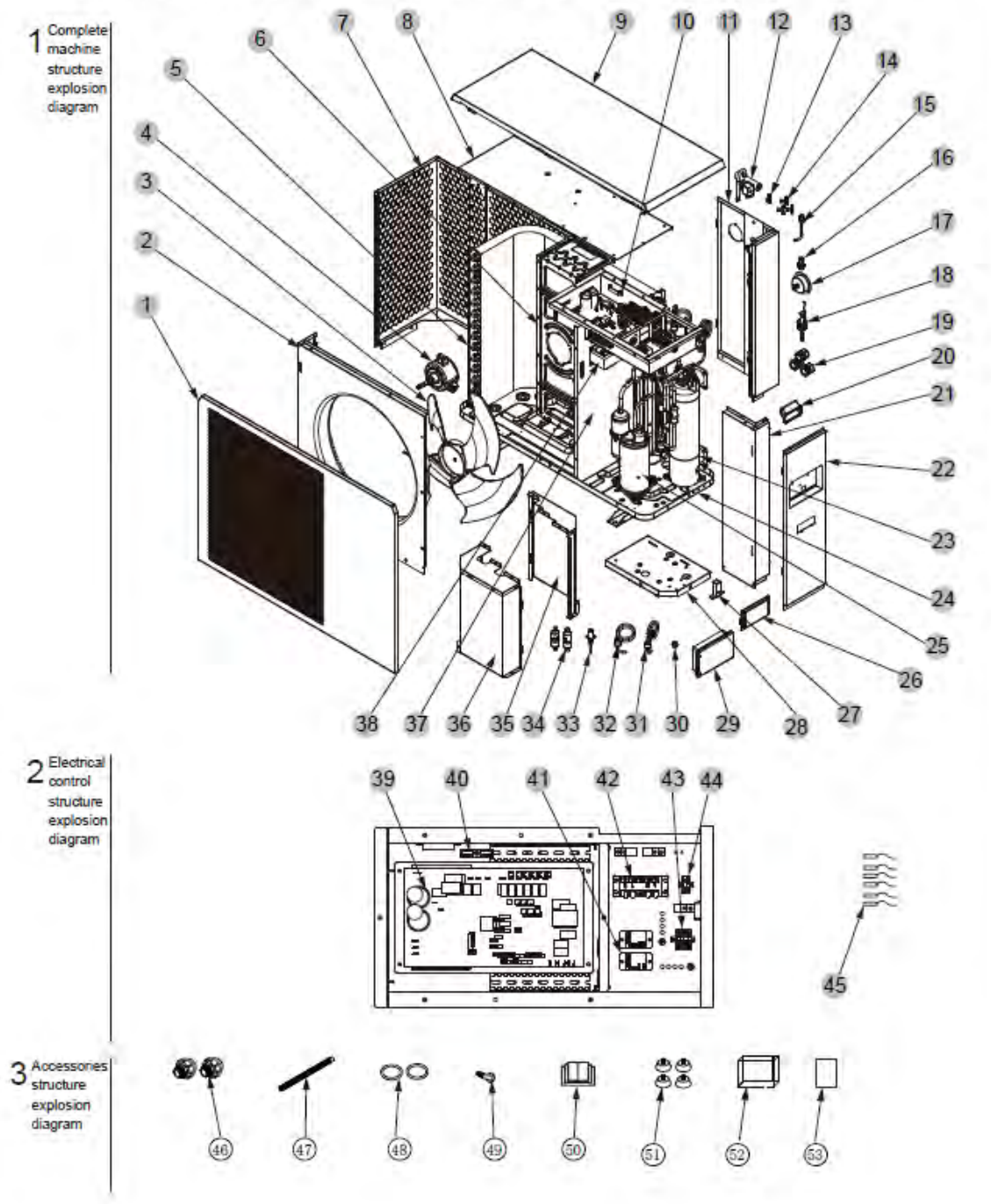


Warmtepomp PPP Premium Full Inverter 13kW

Omschrijving: Warmtepomp PPP Premium Full Inverter 13kW
Artikelnummer leverancier: PASRW030-P-BP15-D15

Exploded Diagram

Model and code: PASRW030-P-BP15-D15 100000001074



Warmtepomp PPP Premium Full Inverter 13kW

Positie	Omschrijving	Artikel Pomaz	Aantal	Artikel Lc	Bijzonderheden
1	Front plate	1912611	1	807000006584	Galvanized plate
2	Air ducting		1	807000005114	Galvanized plate
3	Fan blade	1912569	1	803000000010	Φ510×156
4	DC fan motor	1912570	1	802000000046	ZWR75-A61
5	Finned heat exchanger		1	806000000188	680×290×700/Φ7×0.3
6	Motor bracket assembly		1	80718435	Galvanized plate
7	Back guard	1912613	1	807000006277	Galvanized plate
8	Electrical box cover		1	807000005452	Galvanized plate
9	Top cover	1912615	1	807000005173	Galvanized plate
10	Electrical box assembly		1	807000005449	Galvanized plate
11	Right side plate assembly	1912620	1	807000009256	Galvanized plate
12	4-way valve assembly		1	810000000028	DSF(S)-9C-R410A
13	3-way valve		1	304030-00000002	Φ9.52-2×Φ6.35(T)×1.0
14	3-way valve		3	2000-1460	Φ6.5-2×Φ6.5(T)×0.75 T2M
15	needle valve		1	20000-140512	95mm 7/16"
16	Pressure sensor	1912574	1	830000000049	DYK-BA020-DV5-4.5
17	Pressure meter	1912477	1	81900044	0-55Kg/cm2
18	Water Switch	1912461	1	83000068	PSL-1 3/4
19	Crossing for wire		3	2001-2238	PG21
20	Handle		1	20000-220073	ABS
21	Front right side panel		1	807000005451	Galvanized plate
22	maintenance plate	1912623	1	807000005087	Galvanized plate
23	Titanium heat exchanger	1912289	1	72300010	Φ9.52×10m Φ110
24	Chassis assembly		1	807000003528	Galvanized plate
25	compressor	1912634	1	80100132	9RD220ZAA21
26	Wire controller		1	823000000042	MXL468
27	Column		1	807000005444	Galvanized plate
28	Support plate assembly		1	807000005456	Galvanized plate
29	Wire controller box	1912450	1	722000000032	PC+ABS
30	nut		1	2000-1415	S17 HPb59-1 1/4"
31	Pressure switch	1912632	1	829000000035	YK-03L 0.15/0.3
32	Pressure switch	1912622	1	829000000050	YK-03H 4.4/3.8
33	Electronic expansion valve		1	81000243	DPF(K1)1.8C-07
34	Filter		2	2004-1444	Φ9.7-Φ9.7 (Φ28) T2Y2
35	Compressor back plate		1	807000007718	Galvanized plate
36	Compressor front plate		1	807000007719	Galvanized plate
37	Middle divider assembly		1	807000005112	Galvanized plate
38	Reactance	1912460	1	82500021	EL205FN
39	Controller assembly	1912639	1	82300380	SP. KYZ1.5-4. 1-3P
40	2-Position Wire Holder		1	2000-3909	RS9211(450V~4mm ²)
41	Relay		2	2000-3619	HF105F-4 30A 220V~
42	5-Position Wire Holder	1912424	1	4000-3901	RS9101(450V~4mm ²) (L、N、PE、1、2)
43	Terminal		1	20000-390047	D-MSB 1.5-F
43	Terminal		3	20000-390046	MSB 2.5-M

Warmtepomp PPP Premium Full Inverter 13kW

43	Terminal		1	20000-390049	MSB 2.5-F
44	Terminal		1	20000-390047	D-MSB 1.5-F
44	Terminal		1	20000-390046	MSB 2.5-M
44	Terminal		1	20000-390049	MSB 2.5-F
45	Outlet water Temp sensor	1912641	1	830000000029	5K
45	Inlet water Temp sensor	1912645	1	830000000004	5K
45	Suction Temp sensor	1912642	1	830000000031	5K
45	Coil Temp sensor	1912647	1	830000000006	5K
45	Ambient Temp sensor	1912648	1	830000000007	5K
45	Exhaust Temp sensor	1912640	1	83000109	50K
46	Inlet/outlet PVCC connector	1912352	2	20000-130096	Φ50×1.5" PVC
47	Corrugated drainage pipe		1	20000-220285	Φ14
48	Rubber ring	1912356	1	20000-260009	Φ47×Φ57
49	Copper pipe fitting	1912417	1	3400-2203	/
50	Product manual		1	/	/
51	Rubber feet	1912588	1	20000-260086	Φ55×20×M12*15
52	Winter cover	1912607	1	841000000034	1060×490×760
53	Warranty card		1	/	A5